

NB ENTERPRISES USA LLC

Wentz Electric Bicycle with the Lithium Ion Battery

Instruction Manual

 **Please use this product according to the instructions**



Haley's Comet Model #603 - Electric Step-through Bicycle

36V 10Ah Lithium Ion Battery
250 Watt Motor

Please keep these instructions in a safe place

Table of Contents

Introduction	3
Important Instructions	5
Assembly and Adjustments.....	6
Operating Instructions.....	8
Lithium Ion Battery	10
Safety Precautions	11
Maintenance	12
Warranty	13

Introduction

Dear Customer,

Thanks for your purchase of our Wentz E-bike. We are excited to have you as a customer and want to make your experience with us and our e-bike a good one. With this in mind, please take the time to read the following manual carefully.

First of all, you need to charge your battery fully before using it. So, while your e-bike is charging, take the time to read this manual. We have worked hard to make it as readable and fun as possible! This manual will help prevent injury and teach you how to care for your new e-bike.

- It is the Owner's responsibility to carefully read all of the contents of this manual and to comply with all laws pertaining to the operation of bicycles and/or electric bicycles in your local jurisdiction. If you have any questions please consult with the Laws web page or consult your local department of motor vehicles for clarification.
- These electric bikes are not classified as motor vehicles. However, to drive them on the roads, various states have differing laws. Please review your state's laws governing these types of bikes.
- We have worked hard to provide you a quality product, well designed, and without defects. You have a part to play...with proper care, maintenance, and attention to bicycle safety rules, your e-bike will give you years of enjoyment.
- Please read the instructions carefully before using. Do not ride this bicycle until you have read and thoroughly understand the owner's manual. It contains information critical to your safety. It is extremely important that you follow the safety guidelines contained in this manual in order to ensure safety. If you loan your bike to anyone make sure they also know how to operate it safely.
- When using, the load should not be greater than the maximum capacity (300 lbs), and pay attention to increase the braking distance during rainy or snowy days.
- Use caution when operating the E-bicycle in rain and snow. However, **it must not be submerged in water or puddles**. The controller, battery, motor and other electrical devices may be short circuited, causing damage and create possible dangerous situations.
- The exposed metal contact on the battery box is positive and an electronegative electrode. It can't be touched with wet hands or with anything metal at the same time, otherwise it may cause the unit to short circuit and result in an accident!



Please don't dismantle or repair the spare parts by yourself. Please go to the local bicycle repair facility or contact your dealer/distributor.

Please take time to record the following information:

Warranty Information

Recording Your Model #603 Information:

VIN: _____

Model: Haley's Comet Model #603

Color: _____

Date of Purchase: _____

Purchased at: _____

Important Instructions

- Safeguard your battery to insure continued high performance. It should be recharged after each use. The normal full-cycle battery life if it is continuously discharged and re-charged is about two years or 800-1000 cycles or recharges, after which the storage capacity of the battery will gradually decline. If it is not fully discharged and is recharged regularly, the service life of the battery will be at its maximum. The batteries supplied are quality lithium batteries specifically designed for this vehicle.



CAUTION! Fully charge the battery before the first use!

- Failure to do this can result in decreased battery performance for the life of the bicycle. Fully charge the battery each time you use the electric bicycle.
- Battery performance is affected by the temperature, and is generally better in warm temperatures. When the temperature is below 32 F (0 C) the battery current may decrease by a third. Consequently the travel range on a full charge in cold environments is much less, but will return when the temperature is back to room temperature again.
- A few tips to prolong the battery life are as follows:
 - Frequent Braking – try to look ahead and coast rather than stop and go frequently.
 - Riding uphill or against a stiff wind – pedal to supplement the battery power.
 - When starting from a standstill – use the pedals to help bring you up to speed.
 - When the battery meter indicates the voltage is low, use the pedals until it can be recharged.
 - If the battery is being stored, remove the battery from the bicycle and recharge it every month.



Always turn off the motor and remove the key from the ignition before and during charging to prevent serious damage to the controller and to the battery!

- This electric bicycle can be used in the rain. However, **it must not be submerged in water or puddles**. The controller, battery, motor and other electrical devices may be short circuited, causing damage and create possible dangerous situations.



DO NOT use chargers or other components other than those tested and approved for use by this bike. The dealer, distributor, or manufacturer is not responsible for damages caused by the use of other products not specifically designed and tested for use with this electric vehicle.

- **Battery Chargers** contain sensitive electronics. Improper use, dropping, or sudden jolts can damage the charger and its internal electronics.

Assembly Instructions

- Carefully take out the e-bike from its carton.
- Put the front wheel into the front fork.



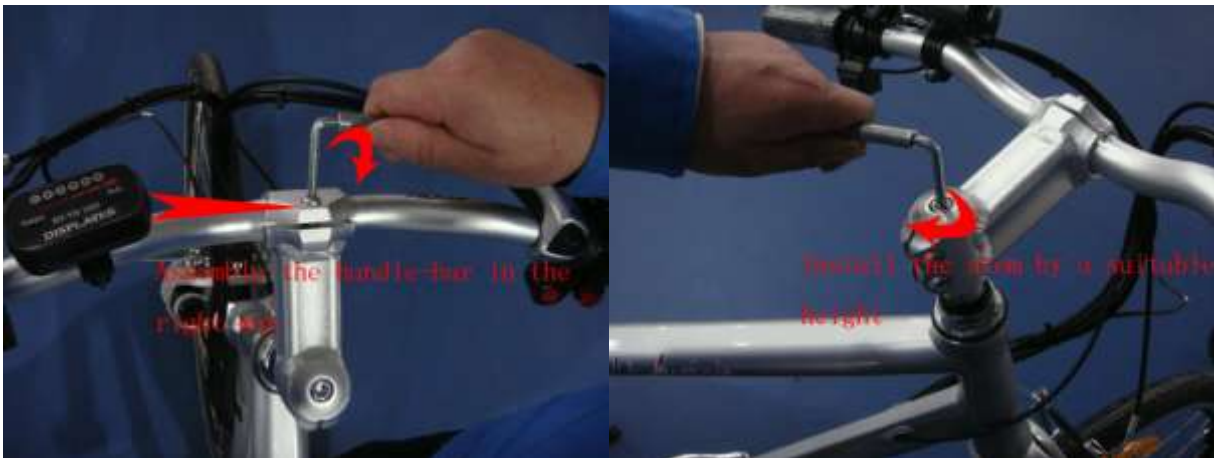
- Attached front light and front mud-guard



- Fasten the hubs, paying attention to the position of the washer and disc brake.
- Assemble the front hub as shown in pictures. The front disc should be carefully placed in the disc-caliper.

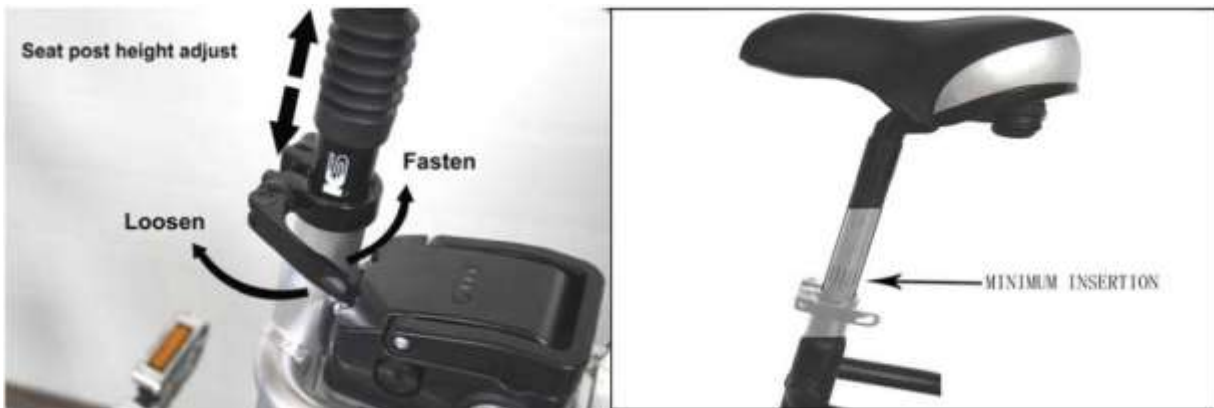


➤ Handle bar and stem

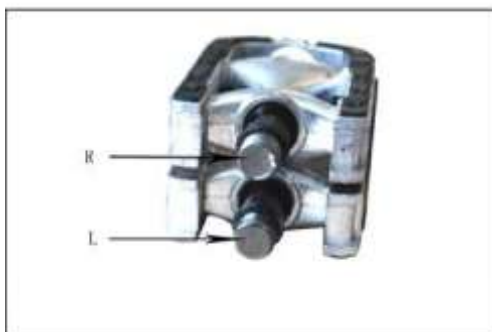


Assemble handle bar and stem as shown in the pictures above.
Attention: There is minimum insertion line on the stem for safety purpose.

➤ Seat Post:

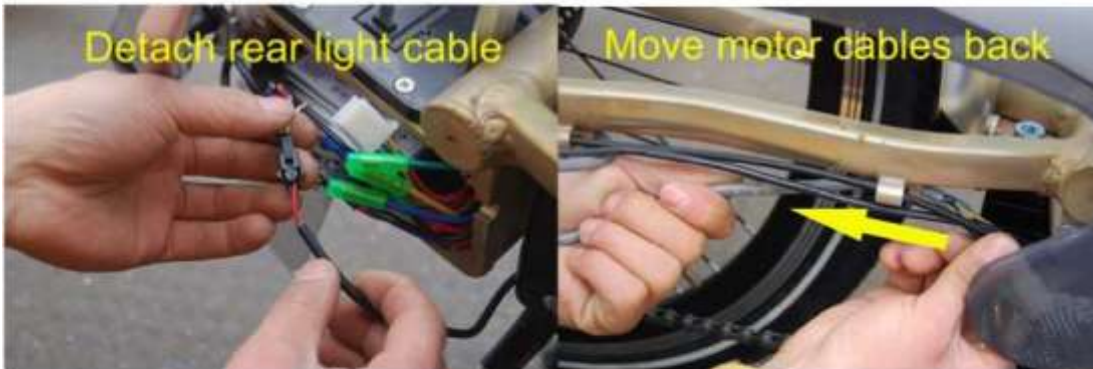


➤ Pedals



There is an R and an L denoting right or left pedal.

- Rear wheel - disassemble (for cases of replacing some parts on rear wheel, such as tire, inner tube, motor and so on)



Operating Instructions

Before You Ride

- **Please check the battery voltage before you use this electric bicycle.** If the battery meter is in the red, you have to fully charge the battery first. If it was removed, install the charged battery case in the battery holding compartment of the bicycle.
- **Check the air pressure** of the tires (45 – 50 psi).
- **Inspect your E-Bike.** Check the front and back brakes and the condition of the front and back wheels, handlebar, and seat. Make sure they are tight and fastened. Make sure all quick releases are locked and secure and all parts are in good working order. Inspect your bicycle completely.
- Looking both ways, for safety, carefully ease throttle on the right hand counterclockwise. It will begin to accelerate the electric bicycle. Your throttle is on the right hand side of your handlebars. It is a variable speed throttle. To increase the speed, turn the throttle towards you (counterclockwise) while seated on the bicycle. There is an automatic SHUT OFF of the throttle on the brake levers. Every time the brake lever is pressed, the power from the motor is discontinued.



Attention: After the key is on, if the rider hits the throttle the vehicle will be propelled forward! Do not turn ON until you are ready to move forward!

- The hand brakes will automatically cut the power to the motor and also will release the throttle. However, you should still avoid using the throttle when the brakes are being applied so you don't overload the motor.
- The maximum specified load of the Electric Bicycle is 300 lbs (130 kg).
- Turn off the power and remove the key, while parking. When you park your bike, please use the lock. The electricity switch should be turned off when pushing, so you don't accidentally turn the throttle, making the electric bicycle start suddenly and cause accidents.



Lithium Ion Battery

Charging instructions:

1. Insert charger's output plug into input socket on battery or electric bicycle.
2. Then insert charger's input plug to power outlet in your house.
3. There is a light indicator on the charger. Red means the battery is being charged. When the



battery has been fully charged it turns green. (It is also green when there is no battery connected.) The battery will be on trickle charge when indicator light on the charger is green. For general safety purposes unplug the charger after it is completely charged.

4. When the battery has been fully charged, please pull out input plug from power source first, then unplug the output plug from battery or bicycle.

Additional Battery Requirements:

- Make sure that voltage in your area is suitable for the charger's input requirement before charging.
- Make sure that the charger's output voltage is suitable for battery's input requirement before charging.
- Make sure that you have turned off the power switch and removed the key before charging.
- If you want to remove the battery pack from the bicycle when charging, please make sure that the battery pack is not lying on its side or upside down.
- Charge battery soon when the voltage is low. **IMPORTANT:** fully charge the battery once you start charging. Since it will harm the life of the battery if you use it not fully charged. Please try to charge it frequently in order to prolong the lifetime of the battery.
- You need to charge the battery continuously at least 12 hours the first time.
- This charger is only to be used inside. Do not use the charger outside or where weather conditions could damage the charger.
- Prevent the charger from getting wet, or too hot. Do not place anything on the charger! Please do not cover with things on top of the charger when using. It must be well ventilated and dry.
- When charging, please try to place battery where children can't have access to it or touch it.
- Do not open the charger case, since there may be high-voltage in the charger.
- Don't touch the two electrodes on the battery with your hands or other electric things. This may cause an electric short, and damage the battery.

Safety Precautions

- Always wear a helmet when riding your electric bicycle!!!
- Before operating your electric bicycle inspect it carefully to avoid accidents or damage.
- Do not drive close to other vehicles.
- ALWAYS keep the power switched OFF until you are seated on the bicycle and ready to ride. Turning the power on and then accidentally twisting the throttle can result in the bicycle lurching forward and cause a possible accident, damage, or injury.
- NEVER attempt to disassemble the motor, battery, controller or throttle. This can result in injury, fire, or damage to the E-Bike.
- ONLY use the charger supplied with your bicycle to charge the battery. Using the improper charger can result in fire or explosion.
- KEEP the batteries out of the reach of children.
- Obey all traffic laws relevant to the operation of electric bicycles.
- KEEP both hands on the handlebars at all times.
- DO NOT hang objects on or under the handlebars.
- DO NOT brake suddenly in the rain or on slippery wet surfaces.
- USE extreme caution when near other vehicles. Assume they do not see you, and be careful at intersections and when starting from a stopped position.
- When cleaning your electric bicycle, do not use a steady direct stream of water from a hose. Use a cloth to avoid short circuiting any electrical components. Your electric bicycle has a durable finish and does not need to be waxed. Clean with a mild detergent and buffing to restore its original shine.
- Wear bright clothing to help make you visible to other motor vehicles.
- Do not wear loose clothing that can become caught on the electric bicycle.

MAINTENANCE

Wheels: If you hear any irregular noise from the wheels, brakes, or axles, you should have the bicycle checked and repaired. Regularly check the spokes of the wheels for tightness and rim alignment. The wheels should rotate smoothly without any noises or irregularities. To check the play of the hubs try to move the rim from side to side between the forks. No substantial play should exist. If you detect play or if the wheel is difficult to turn, the bearings may need to be adjusted or replaced. Please contact a local bike or bicycle dealer to have the hub bearings adjusted for new bearings.

Tires: Inflate your tires to the pressure embossed on the sidewall before use of your new bicycle. It is recommended that the tire pressure for your electric bicycle be at least 40 psi. Every time that you ride make sure that the tires are inflated according to the pressure on the sidewall. Improper tire pressure will make riding more difficult, cause excess wear and premature failure of the tire. The tire should be properly sealed in the rim and the fitting of the tire bead and rim bead should be checked. If the tube is pinched between the rim and the tire, it will fail when inflated. Make sure that the tire is not cracked or worn unevenly. Check for bulges. Check and make sure that the valve stem is straight in the rim. Irregular tires should be replaced immediately.

Brakes: Riding with brakes that are worn or damaged, improperly adjusted, or with worn cables or wheels in poor condition may result in losing control of your bicycle. Wet weather may hinder the brake performance. You need more distance to safely stop in the rain or in a wet or icy street. Before each ride, check to make sure your brake cables are free of obstacles, and are working properly before operating your vehicles.

Batteries: There is a locking key to lock these batteries on your bicycle to discourage theft. Do not attempt to open any of these batteries in any way! Doing so may cause chemical, electrical, and/or fire hazards.

Axles: Change lubricating grease on the front axle, rear axle and pivot etc. once every three months, after you clean the axels well.

Warranty

With normal care and recommended maintenance, this electric bicycle is warranted to be free of defects in materials and workmanship for the following period of time:

- 3 months – electronic controller, charger, battery, and throttle
- 6 months – hub motor

We will repair or replace, at our option, any product or part that is defective in material or workmanship, without charge if the product is returned to the point of purchase, with dated proof of purchase inside of the warranty period.

This limited warranty does not cover the normal wear of items such as tires, brakes, chains, and other items. All implied warranties are limited to the stated time period.

Our company and any of its subsidiaries will not be liable for any incidental or consequential damages.

This warranty applies to normal consumer use of the product. Use in a rental fleet, commercial setting, or government fleet will void this warranty. Inappropriate use such as trick riding, abusive riding or off-road riding, will void the warranty.

NB Enterprises USA LLC, its dealers or distributors are not liable for any accidents associated with this Electric Bicycle.

**For any further questions concerning your
Wentz Electric Bike please contact us at:
NB Enterprises USA LLC
(414) 235-5011
Or visit our website: www.nbebikes.com**